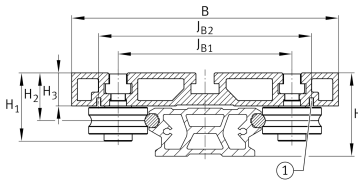
**LFCL86**

Carro

hollow section carriage, clearance-free

Información técnica

**Variante de su producto actual**

Size code 86

Medidas principales y datos de rendimiento

H 1 48,4 mm

B 190 mm

L 235 mm

≈m 2,2 kg Peso

Medidas de montaje

G 4 M10x14

H 59 mm Total height of carriage and rail at LFS, -C, -CE, -CEE, -E, -EE, -N, -NZZ

H 2 33,9 mm

H 2 Tol 0,3

H 2 Tol 0

H 3 23,4 mm

J B 124 mm

J B1 124 mm

J B2 151,5 mm

J L1 155 mm

J L3 max 119 mm

J L3 min 18 mm



Medidas principales

C_y	17.800 N	Basic dynamic load rating in y-direction
C_{0y}	8.850 N	Basic static load rating in y-direction
C_z	28.400 N	Basic dynamic load rating in z-direction
C_{0z}	15.500 N	Basic static load rating in z-direction
M_{0x}	335 Nm	Static moment about X-axis
M_{0y}	1.190 Nm	Static moment about Y-axis
M_{0z}	680 Nm	Static moment about Z-axis

Productos relacionados

LFR	LFR5301-10-2Z	Used track roller
LFS	LFS86	Guide rail