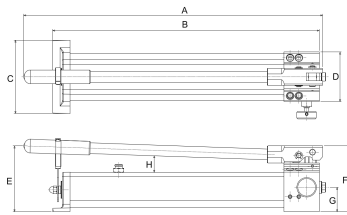


**AHP-701-SET** [↗](#)**Bomba hidráulica manual**

BETEX Aluminum hand pump, two-stage,
in set with pressure gauge, T-piece, hose,
couplings and steel box

Información técnica**Variante de su producto actual**

Series	AHP	Aluminum lightweight hand pump, 2-stage
Version	HC	For use with hydraulic cylinders

Datos técnicos

P max	700 bar	Presión máxima de funcionamiento
P 1	20 bar	Operating pressure, 1st stage
\dot{V}_{H1}	12,9 cm ³	Oil flow/stroke, 1st stage
\dot{V}_{H2}	1,65 cm ³	Oil flow/stroke, 2nd stage
V max	0,5 l	Volumen del depósito de aceite
V eff	0,35 l	Cantidad utilizable de aceite
	single-acting	Cylinder compatibility
	3/8" NPT	Hose connection pump body
	391 mm	Longitud
	110 mm	Anchura
	140 mm	Altura
	3,6 kg	Weight pump
	722 x 155 x 166	Dimensions steel case (mm)
≈m	10,4 kg	Peso



Medidas

A	391 mm
B	361 mm
C	110 mm
D	77 mm
E	140 mm
F	127 mm
G	42,5 mm
H	37 mm

Información adicional

preferably in combination with hydraulic cylinders and hydraulic pullers HXP

Use