

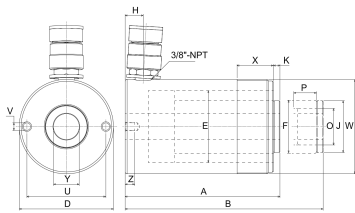


### NSHS-121 [↗](#)

Hydraulic cylinder, 700 bar

BETEX NSHS Hollow-piston cylinder, single-acting, spring return, 12T class

## Información técnica



### Variante de su producto actual

Series	NSHS	Hollow piston cylinder
Version	12T	Capacity class 12



### Datos técnicos

	12	Capacity class (tons)
s <sub>p</sub>	42 mm	Stroke
A <sub>p</sub>	18,9 cm <sup>2</sup>	Effective piston area
F <sub>a</sub>	132 kN	Advance force, max.
P <sub>max</sub>	700 bar	Presión máxima de funcionamiento
V <sub>oil</sub>	79 cm <sup>3</sup>	Oil capacity
A	120 mm	Height, retracted
B	162 mm	Height, extended
D	73 mm	Diámetro exterior
E	55 mm	Cylinder bore diameter
F	35 mm	Plunger diameter
H	19 mm	Base to advance port
U	50,8 mm	Base mounting holes, bolt circle
V	5/16"-18 UN	Base mounting holes, thread (UNC)
Z	12,7 mm	Base mounting holes, thread depth
W	2 3/4"-16 UN	Collar thread (UN)
X	33 mm	Collar thread, length
Y	19,5 mm	Center hole diameter
≈m	3 kg	Peso

### Información adicional

Hard chrome plated and hardened piston,  
Rolled inside of cylinder,  
Sandblasted outside with black nitride coating,  
Coupling with dust cap

Product specifics