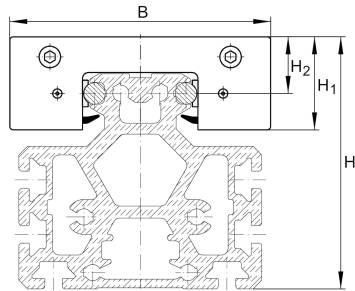
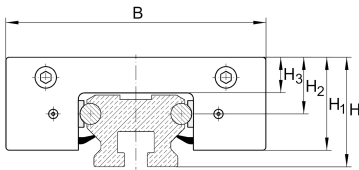


## LFKL20-SF [↗](#)

Carro

compact carriage, clearance-free; corrosion-resistant design possible

### Información técnica

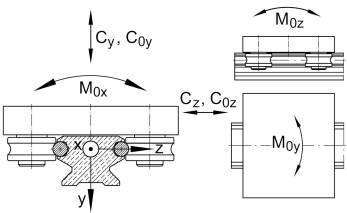
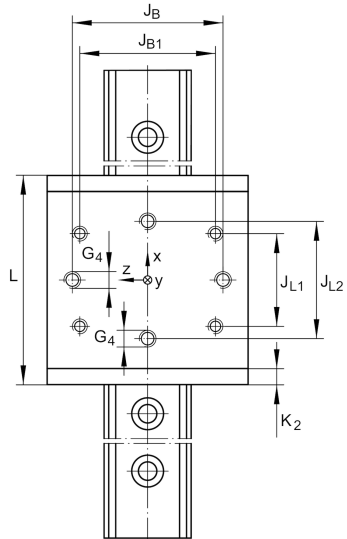
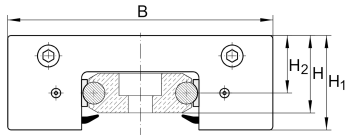


#### Variante de su producto actual

Size code	20	
Setting	SF	Clearance-free

#### Medidas principales y datos de rendimiento

H <sub>1</sub>	20,5 mm	
B	56 mm	
L	69 mm	
≈m	0,2 kg	Peso



### Medidas de montaje

G 4	M5	
H	22 mm	Total height of carriage and rail at LFS, -C, -CE, -CEE, -E, -EE, -N, -NZZ
H 2	13 mm	
H 2 Tol	0,3	
H 2 Tol	0	
H 3	8,7 mm	
J B	39 mm	
J B Tol	0,2	
J B Tol	-0,2	
J B1	34 mm	
J L1	34 mm	
J L2	49 mm	
J L2 Tol	0,2	
J L2 Tol	-0,2	
K 2	5 mm	

### Medidas principales

M A	2,5 Nm	Tightening torque (standard version)
M A	2,5 Nm	Tightening torque (corrosion-resistant version)
C y	1.350 N	Basic dynamic load rating in y-direction
C 0y	870 N	Basic static load rating in y-direction
C z	2.400 N	Basic dynamic load rating in z-direction
C 0z	1.700 N	Basic static load rating in z-direction
M 0x	7 Nm	Static moment about X-axis
M 0y	28 Nm	Static moment about Y-axis
M 0z	15 Nm	Static moment about Z-axis



Ver detalles del producto en Medias

11.11.2025, 16:47:36 UTC

**SCHAEFFLER**

### Productos relacionados

---

LFR	LFR50/5-4-2Z	Used track roller
LFS	LFS20	Guide rail