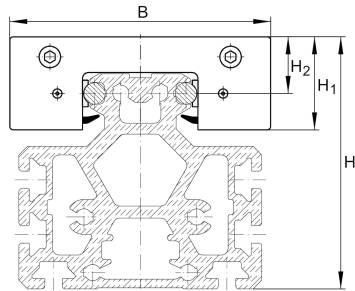
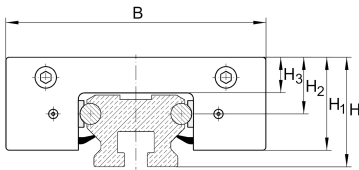


LFKL25-SF [↗](#)

Carro

compact carriage, clearance-free; corrosion-resistant design possible

Información técnica

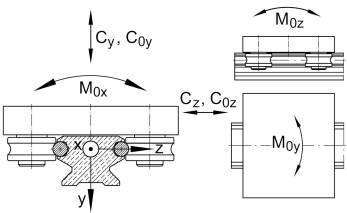
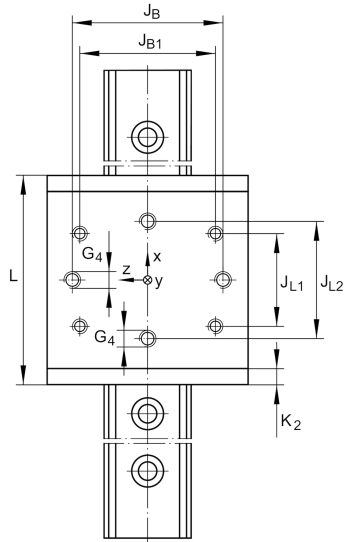
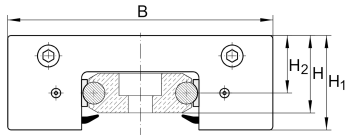


Variante de su producto actual

Size code	25	
Setting	SF	Clearance-free

Medidas principales y datos de rendimiento

H ₁	23,5 mm	
B	65 mm	
L	85 mm	
≈m	0,3 kg	Peso



Medidas de montaje

G 4	M5	
H	25 mm	Total height of carriage and rail at LFS, -C, -CE, -CEE, -E, -EE, -N, -NZZ
H	56 mm	Total height of carriage and rail at LFS.-M
H 2	14,4 mm	
H 2 Tol	0,3	
H 2 Tol	0	
H 3	9 mm	
J B	50 mm	
J B Tol	0,2	
J B Tol	-0,2	
J B1	40 mm	
J L1	45 mm	
J L2	60 mm	
J L2 Tol	0,2	
J L2 Tol	-0,2	
K 2	5 mm	

Medidas principales

M A	2,5 Nm	Tightening torque (standard version)
M A	2,5 Nm	Tightening torque (corrosion-resistant version)
C y	1.280 N	Basic dynamic load rating in y-direction
C 0y	820 N	Basic static load rating in y-direction
C z	2.580 N	Basic dynamic load rating in z-direction
C 0z	1.800 N	Basic static load rating in z-direction
M 0x	8 Nm	Static moment about X-axis
M 0y	40 Nm	Static moment about Y-axis
M 0z	18 Nm	Static moment about Z-axis



Ver detalles del producto en Medias

11.11.2025, 16:47:40 UTC

SCHAEFFLER

Productos relacionados

LFR	LFR50/5-6-2Z	Used track roller
LFS	LFS25	Guide rail