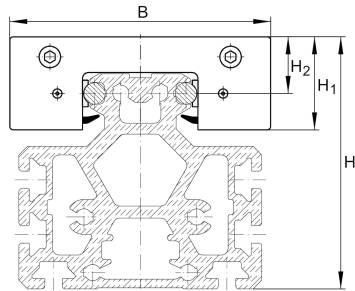
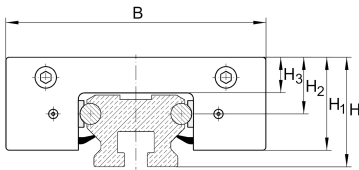


LFKL32-SF [↗](#)

Carro

compact carriage, clearance-free; corrosion-resistant design possible

Información técnica

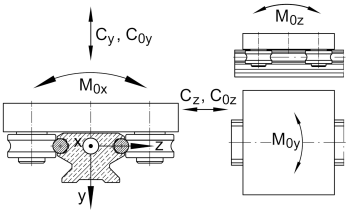
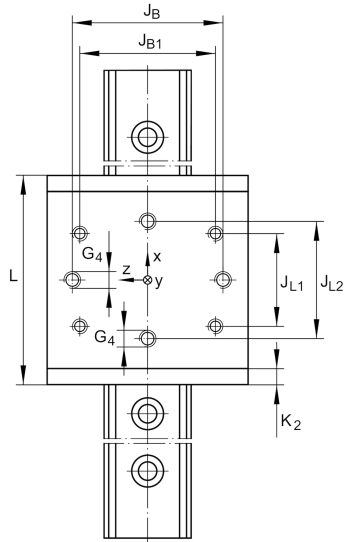
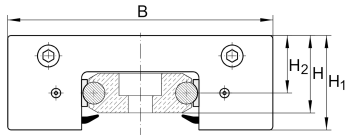


Variante de su producto actual

Size code	32	
Setting	SF	Clearance-free

Medidas principales y datos de rendimiento

H ₁	32 mm	
B	86 mm	
L	1.120 mm	
≈m	0,55 kg	Peso

**Medidas de montaje**

G 4	M8	
H	35,5 mm	Total height of carriage and rail at LFS, -C, -CE, -CEE, -E, -EE, -N, -NZZ
H	25,5 mm	Total height of carriage and rail at LFS.-F, -FE
H	81,5 mm	Total height of carriage and rail at LFS.-M
H 2	20,5 mm	
H 2 Tol	0,3	
H 2 Tol	0	
H 3	14 mm	
J B	59 mm	
J B Tol	0,2	
J B Tol	-0,2	
J B1	54 mm	
J L1	60 mm	
J L2	70 mm	
J L2 Tol	0,2	
J L2 Tol	-0,2	
K 2	7 mm	



Medidas principales

M_A	15 Nm	Tightening torque (standard version)
M_A	12 Nm	Tightening torque (corrosion-resistant version)
C_y	4.100 N	Basic dynamic load rating in y-direction
C_{0y}	2.400 N	Basic static load rating in y-direction
C_z	6.600 N	Basic dynamic load rating in z-direction
C_{0z}	4.200 N	Basic static load rating in z-direction
M_{0x}	30 Nm	Static moment about X-axis
M_{0y}	130 Nm	Static moment about Y-axis
M_{0z}	70 Nm	Static moment about Z-axis

Productos relacionados

LFR	LFR50/8-6-2Z	Used track roller
LFS	LFS32	Guide rail