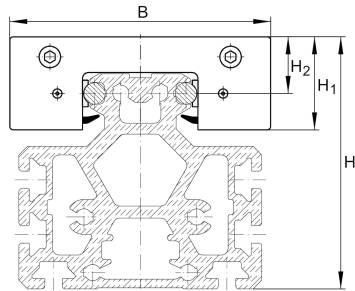
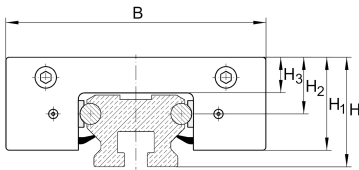


### LFKL52-E-SF [↗](#)

Carro

Carro

## Información técnica

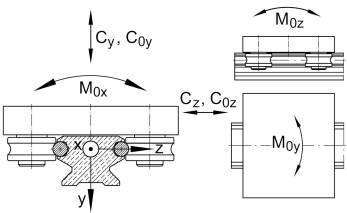
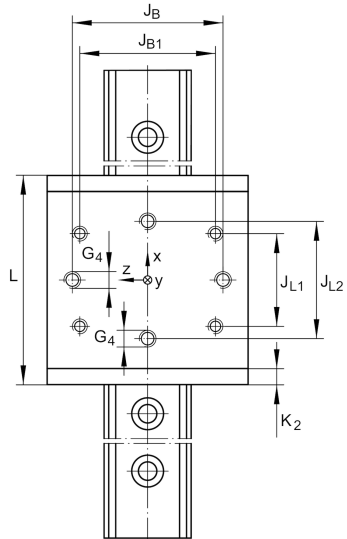
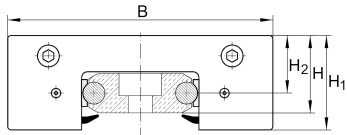


### Variante de su producto actual

Size code	52	
Setting	SF	Clearance-free
Carriage design	E	Wide, long design

### Medidas principales y datos de rendimiento

H <sub>1</sub>	53,8 mm	
B	145 mm	
L	186 mm	
≈m	2,65 kg	Peso

**Medidas de montaje**

G 4	M10	
H	60,4 mm	Total height of carriage and rail at LFS, -C, -CE, -CEE, -E, -EE, -N, -NZZ
H	44,3 mm	Total height of carriage and rail at LFS.-F, -FE
H	125 mm	Total height of carriage and rail at LFS.-M
H 2	35,3 mm	
H 2 Tol	0,3	
H 2 Tol	0	
H 3	24 mm	
J B	105 mm	
J B Tol	0,2	
J B Tol	-0,2	
J B1	90 mm	
J L1	105 mm	
J L2	110 mm	
J L2 Tol	0,2	
J L2 Tol	-0,2	
K 2	10 mm	



### Medidas principales

$M_A$	40 Nm	Tightening torque (standard version)
$M_A$	23 Nm	Tightening torque (corrosion-resistant version)
$C_y$	17.800 N	Basic dynamic load rating in y-direction
$C_{0y}$	8.900 N	Basic static load rating in y-direction
$C_z$	28.400 N	Basic dynamic load rating in z-direction
$C_{0z}$	15.500 N	Basic static load rating in z-direction
$M_{0x}$	180 Nm	Static moment about X-axis
$M_{0y}$	800 Nm	Static moment about Y-axis
$M_{0z}$	460 Nm	Static moment about Z-axis

### Productos relacionados

LFR	LFR5301-10-2Z	Used track roller
LFS	LFS52-E	Guide rail