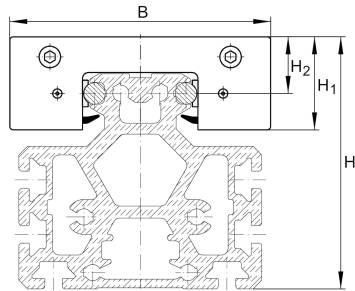
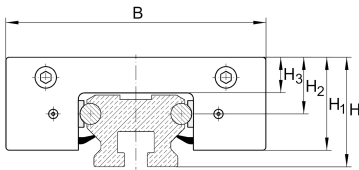


LFKL52-SF [↗](#)

Carro

compact carriage, clearance-free; corrosion-resistant design possible

Información técnica

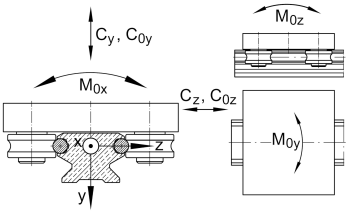
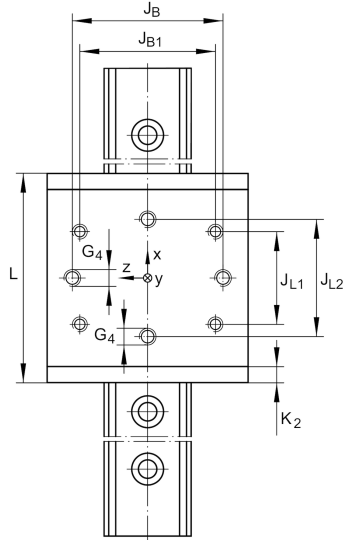
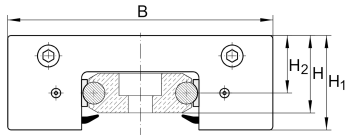


Variante de su producto actual

| | | |
|-----------|----|----------------|
| Size code | 52 | |
| Setting | SF | Clearance-free |

Medidas principales y datos de rendimiento

| | | |
|----------------|---------|------|
| H ₁ | 46 mm | |
| B | 130 mm | |
| L | 136 mm | |
| ≈m | 1,45 kg | Peso |

**Medidas de montaje**

| | | |
|----------|----------|--|
| G 4 | M10 | |
| H | 54,3 mm | Total height of carriage and rail at LFS, -C, -CE, -CEE, -E, -EE, -N, -NZZ |
| H | 38,2 mm | Total height of carriage and rail at LFS.-F, -FE |
| H | 118,9 mm | Total height of carriage and rail at LFS.-M |
| H 2 | 29,2 mm | |
| H 2 Tol | 0,3 | |
| H 2 Tol | 0 | |
| H 3 | 19,4 mm | |
| J B | 90 mm | |
| J B Tol | 0,2 | |
| J B Tol | -0,2 | |
| J B1 | 83 mm | |
| J L1 | 60 mm | |
| J L2 | 70 mm | |
| J L2 Tol | 0,2 | |
| J L2 Tol | -0,2 | |
| K 2 | 10 mm | |



Medidas principales

| | | |
|----------|----------|---|
| M_A | 40 Nm | Tightening torque (standard version) |
| M_A | 23 Nm | Tightening torque (corrosion-resistant version) |
| C_y | 10.000 N | Basic dynamic load rating in y-direction |
| C_{0y} | 5.200 N | Basic static load rating in y-direction |
| C_z | 16.800 N | Basic dynamic load rating in z-direction |
| C_{0z} | 10.000 N | Basic static load rating in z-direction |
| M_{0x} | 110 Nm | Static moment about X-axis |
| M_{0y} | 290 Nm | Static moment about Y-axis |
| M_{0z} | 150 Nm | Static moment about Z-axis |

Productos relacionados

| | | |
|-----|---------------|-------------------|
| LFR | LFR5201-10-2Z | Used track roller |
| LFS | LFS52 | Guide rail |