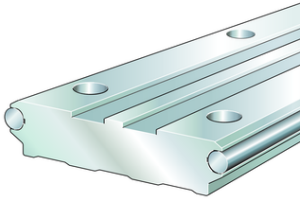


**LFS120-E**

Carril-guía

solid profile, fixing hole spacing half of standard, with two raceway shafts; corrosion-resistant design possible



Información técnica

Variante de su producto actual

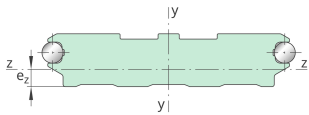
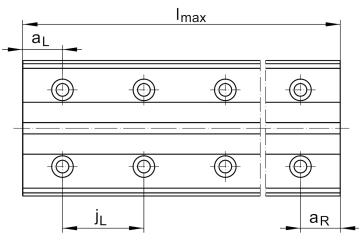
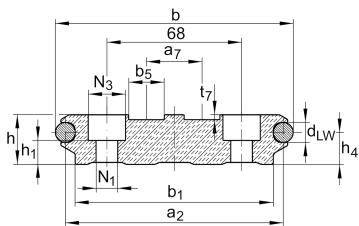
| | | |
|----------------------|-----|--------------------------------------|
| Size code | 120 | |
| Locationing guideway | E | Fixing hole spacing half of standard |

Medidas principales y datos de rendimiento

| | | |
|-----------------|---------------------------|-------------------------|
| h | 25 mm | Height |
| b | 120 mm | Width |
| l_{max} | 8.000 mm | Length maximum |
| I_y | 2.330.980 mm ⁴ | Second moment of area |
| I_z | 9.365 mm ⁴ | Second moment of area |
| LF _Q | 2.468 mm ² | Cross-sectional area |
| W_y | 40.751 mm ³ | Wider resistance torque |
| W_z | 117.074 mm ³ | Wider resistance torque |

Medidas de montaje

| | | |
|-------|-------|---------------|
| N_1 | 11 mm | Bore diameter |
| N_3 | 19 mm | Bore diameter |





Medidas

| | | |
|--------------------|---------|-----------|
| a ₂ | 110 mm | Distance |
| a ₇ | 28 mm | Distance |
| a _{L max} | 110 mm | Distance |
| a _{L min} | 17 mm | Distance |
| a _{R max} | 110 mm | |
| a _{R min} | 17 mm | |
| b ₁ | 100 mm | Anchura |
| b ₅ | 18 mm | Width |
| d _{LW} | 10 mm | Diameter |
| e _Z | 12,5 mm | Distance |
| h ₁ | 12 mm | Height |
| h ₄ | 16,1 mm | Height |
| j _L | 125 mm | Increment |
| t ₇ | 2,5 mm | Depth |