**LFS20**

## Carril-guía

solid profile, with two raceway shafts;  
corrosion-resistant design possible

## Información técnica

## Variante de su producto actual

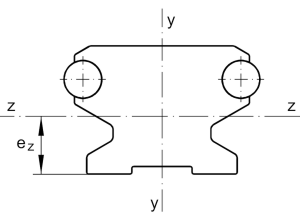
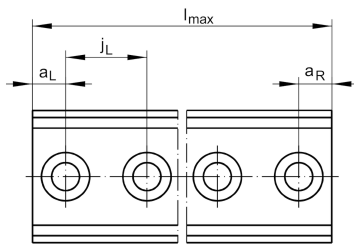
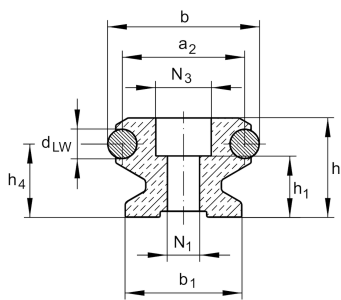
Size code	20
-----------	----

## Medidas principales y datos de rendimiento

h	12,2 mm	Height
b	20 mm	Width
$l_{\max}$	2.400 mm	Length maximum
$I_y$	3.065 mm <sup>4</sup>	Second moment of area
$I_z$	2.053 mm <sup>4</sup>	Second moment of area
LF Q	165 mm <sup>2</sup>	Cross-sectional area
$W_y$	362 mm <sup>3</sup>	Wider resistance torque
$W_z$	324 mm <sup>3</sup>	Wider resistance torque

## Medidas de montaje

$N_1$	4,5 mm	Bore diameter
$N_3$	8 mm	Bore diameter





### Medidas

a <sub>2</sub>	16,2 mm	Distance
a <sub>L max</sub>	54 mm	Distance
a <sub>L min</sub>	9 mm	Distance
a <sub>R max</sub>	54 mm	
a <sub>R min</sub>	9 mm	
b <sub>1</sub>	17 mm	Anchura
d <sub>LW</sub>	4 mm	Diameter
e <sub>Z</sub>	6,4 mm	Distance
h <sub>1</sub>	7,6 mm	Height
h <sub>4</sub>	9 mm	Height
j <sub>L</sub>	62,5 mm	Increment