**LFS25**

Carril-guía

solid profile, with two raceway shafts;
corrosion-resistant design possible

Información técnica

Variante de su producto actual

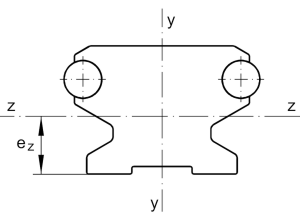
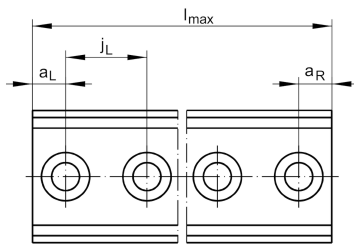
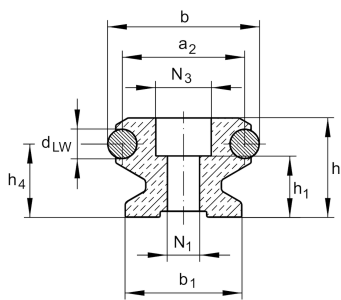
Size code	25
-----------	----

Medidas principales y datos de rendimiento

h	15 mm	Height
b	25 mm	Width
l_{\max}	2.400 mm	Length maximum
I_y	6.390 mm ⁴	Second moment of area
I_z	4.510 mm ⁴	Second moment of area
LF Q	237 mm ²	Cross-sectional area
W_y	608 mm ³	Wider resistance torque
W_z	600 mm ³	Wider resistance torque

Medidas de montaje

N_1	5,5 mm	Bore diameter
N_3	10 mm	Bore diameter





Medidas

a ₂	19 mm	Distance
a _{L max}	54 mm	Distance
a _{L min}	10 mm	Distance
a _{R max}	54 mm	
a _{R min}	10 mm	
b ₁	21 mm	Anchura
d _{LW}	6 mm	Diameter
e _Z	7,5 mm	Distance
h ₁	8,5 mm	Height
h ₄	10,6 mm	Height
j _L	62,5 mm	Increment