**KUVS13-B**

Patin con recirculación a bolas

linear recirculating ball bearing units for  
guideway with raceways on both sides

## Información técnica

## Variante de su producto actual

Size code 13

Suffix B

## Medidas principales y datos de rendimiento

H 19 mm Height system

B 75 mm Width system

L 71 mm Length linear recirculating ball bearing units

h 18 mm Height rail

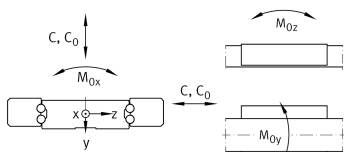
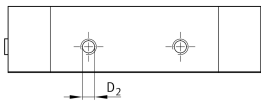
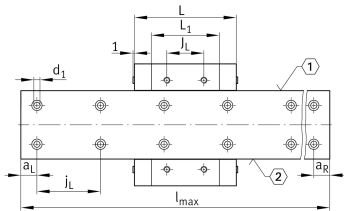
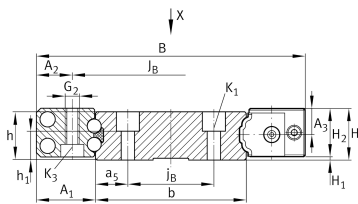
b 42 mm Width rail

l<sub>max</sub> 2.940 mm Max. length rail

C 13.500 N Load capacity dyn C

C<sub>0</sub> 26.000 N Load capacity dyn C<sub>0</sub>M<sub>0X</sub> 648 Nm Moment ratings M<sub>0X</sub>M<sub>0Y</sub> 211 Nm Moment ratings M<sub>0Y</sub>M<sub>0Z</sub> 211 Nm Moment ratings M<sub>0Z</sub>

≈m 85 g Peso



**Medidas de montaje**

A <sub>1</sub>	16,5 mm	
A <sub>2</sub>	10 mm	
J <sub>B</sub>	55 mm	
j <sub>B</sub>	24 mm	
a <sub>5</sub>	9 mm	
L <sub>1</sub>	48,5 mm	
J <sub>L</sub>	20 mm	
j <sub>L</sub>	60 mm	
a <sub>Lmin</sub>	20 mm	
a <sub>Lmax</sub>	53 mm	
a <sub>Rmin</sub>	20 mm	
a <sub>Rmax</sub>	53 mm	
H <sub>1</sub>	5,5 mm	
H <sub>2</sub>	13,5 mm	Height linear recirculating ball bearing units
A <sub>3</sub>	7,3 mm	
h <sub>1</sub>	11,4 mm	
K <sub>1</sub>	M3	Thread
K <sub>1 MA</sub>	2,5 Nm	Tightening torque
G <sub>2</sub>	M4	Thread
G <sub>2 MA</sub>	3 Nm	Tightening torque
K <sub>3</sub>	M3	Thread
K <sub>3 MA</sub>	2,5 Nm	Tightening torque
d <sub>1</sub>	3,8 mm	Diameter
D <sub>2</sub>	3,3 mm	Diameter



Ver detalles del producto en Medias

11.11.2025, 17:07:55 UTC

**SCHAEFFLER**

### Productos relacionados

---

KUVS13-B	Linear recirculating ball bearing unit
----------	--

TKVD42, TKVD14	Associated rail(s)
----------------	--------------------

KA8-TN	Closing plug rail
--------	-------------------