**KUVS17-B**

Patin con recirculación a bolas

linear recirculating ball bearing units for
guideway with raceways on both sides

Información técnica

Variante de su producto actual

Size code 17

Suffix B

Medidas principales y datos de rendimiento

H 18 mm Height system

B 116 mm Width system

L 96 mm Length linear recirculating ball bearing units

h 17 mm Height rail

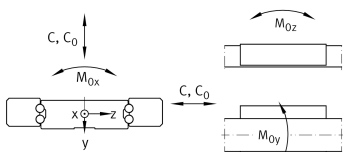
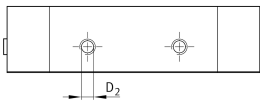
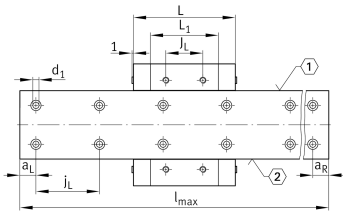
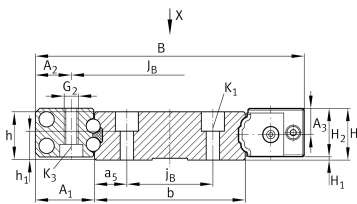
b 71 mm Width rail

l_{max} 2.940 mm Max. length rail

C 26.000 N Load capacity dyn C

C₀ 46.500 N Load capacity dyn C₀M_{0X} 1.872 Nm Moment ratings M_{0X}M_{0Y} 492 Nm Moment ratings M_{0Y}M_{0Z} 492 Nm Moment ratings M_{0Z}

≈m 199 g Peso



**Medidas de montaje**

A ₁	22,5 mm	
A ₂	13 mm	
J _B	90 mm	
j _B	50 mm	
a ₅	10,5 mm	
L ₁	64 mm	
J _L	35 mm	
j _L	60 mm	
a _{Lmin}	20 mm	
a _{Lmax}	53 mm	
a _{Rmin}	20 mm	
a _{Rmax}	53 mm	
H ₁	0,5 mm	
H ₂	17,5 mm	Height linear recirculating ball bearing units
A ₃	9,5 mm	
h ₁	8,3 mm	
K ₁	M5	Thread
K _{1 MA}	10 Nm	Tightening torque
G ₂	M6	Thread
G _{2 MA}	10 Nm	Tightening torque
K ₃	M4	Thread
K _{3 MA}	3 Nm	Tightening torque
d ₁	6 mm	Diameter
D ₂	4,9 mm	Diameter



Ver detalles del producto en Medias

11.11.2025, 17:07:58 UTC

SCHAEFFLER

Productos relacionados

TKVD71

Associated rail(s)

KA10-TN

Closing plug rail