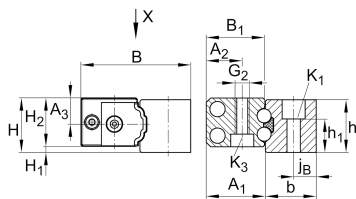


TKVD14 [↗](#)

Guideways for linear recirculating ball bearing unit

half guideway for linear recirculating ball bearing unit

Información técnica



Variante de su producto actual

Size code 14

Medidas principales y datos de rendimiento

h 14 mm Height

b 13,5 mm Width

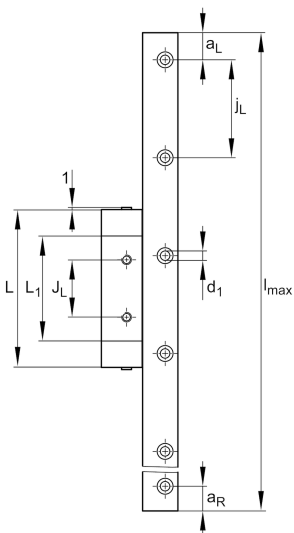
≈m 1,45 kg/m Peso

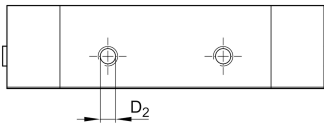
Medidas de montaje

K 1 M3 Thread

K1 M A 2,5 Nm Tightening torque

d 1 3,8 mm Bore diameter





Medidas

l_{max}	1.940 mm	Max length single piece guideway
$a_{L max}$	53 mm	Distance
$a_{L min}$	20 mm	Distance
$a_{R max}$	53 mm	
$a_{R min}$	20 mm	
j_L	60 mm	Increment
j_B	6 mm	Increment
a_5	6 mm	Distance
h_1	7,4 mm	Longitud

