**TKVD30-ADE** [↗](#)

Carril perfilado

Guideways for four-row linear recirculating ball bearing and guideway assembly, with slot covering strip, TKVD..-ADE

Información técnica

Variante de su producto actual

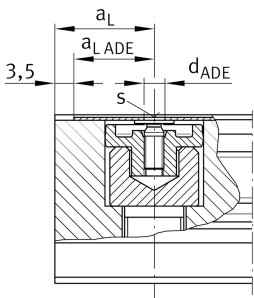
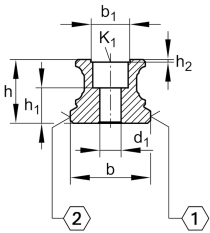
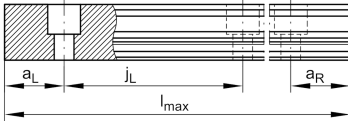
| | | |
|-----------------|-------|---|
| Size code | 30 | |
| Longitud | ~6000 | |
| Guideway design | ADE | For stainless steel cover strip, reusable, can be slid into place |

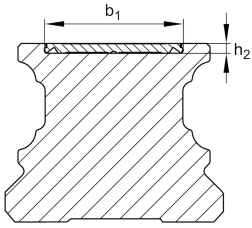
Medidas principales y datos de rendimiento

| | | |
|-------|-----------|---------------------|
| h | 23,5 mm | Altura |
| b | 28 mm | Anchura |
| Tol b | -0,005 mm | Tolerancia superior |
| Tol b | -0,035 mm | Lower tolerance |
| ≈m | 4,3 kg/m | Peso |

Medidas de montaje

| | | |
|-------------------------------|-------|----------------------|
| K ₁ | M8 | Rosca |
| K ₁ M _A | 41 Nm | Par de apriete |
| d ₁ | 9 mm | Diámetro del agujero |





Medidas

| | | |
|-------------|----------|---|
| l_{max} | 6.000 mm | Longitud máx. del carril-guía de una sola pieza |
| $a_{L max}$ | 71 mm | Distancia |
| $a_{L min}$ | 20 mm | Distancia |
| $a_{R max}$ | 71 mm | |
| $a_{R min}$ | 20 mm | |
| j_L | 80 mm | Incremento |
| h_1 | 11 mm | Longitud |
| Tol h_1 | 0,5 mm | Tolerancia superior |
| Tol h_1 | -0,5 mm | Distance Distance |
| h_2 | 1,1 mm | Profundidad |
| b_1 | 17 mm | Anchura |
| d_{ADE} | 3,9 mm | Bore diameter |
| s | 0,6 mm | Thickness |

Información adicional

| | |
|------------|-----------------------|
| KWVE30-B.. | Usable carriage(s) |
| KUVE30-B.. | Usable linear systems |