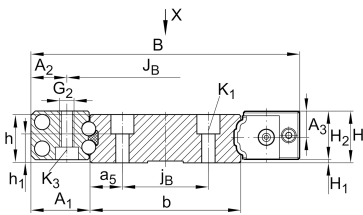
**TKVD32** [↗](#)

Guideways for linear recirculating ball bearing unit

full guideway for linear recirculating ball bearing units

Información técnica



Variante de su producto actual

Size code 32

Medidas principales y datos de rendimiento

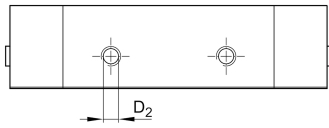
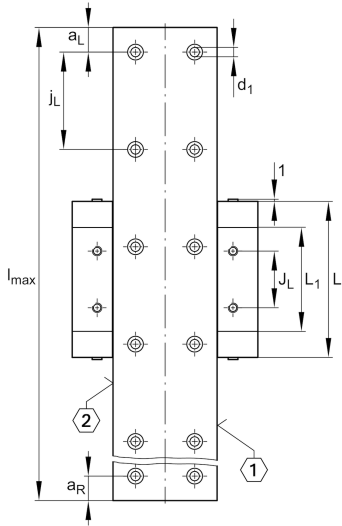
h 10 mm Height

b 31,8 mm Width

≈m 2,3 kg/m Peso

Medidas de montaje

K₁ M3 ThreadK1 M_A 2,5 Nm Tightening torqued₁ 3,8 mm Bore diameter



Medidas

l_{max}	1.960 mm	Max length single piece guideway
$a_{L\ max}$	34 mm	Distance
$a_{L\ min}$	20 mm	Distance
$a_{R\ max}$	34 mm	
$a_{R\ min}$	20 mm	
j_L	40 mm	Increment
j_B	18 mm	Increment
a_5	6,9 mm	Distance
h_1	3,4 mm	Longitud

