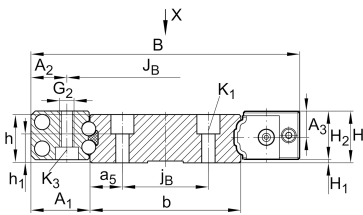
**TKVD42** [↗](#)

Guideways for linear recirculating ball bearing unit

full guideway for linear recirculating ball bearing units

Información técnica

**Variante de su producto actual**

Size code 42

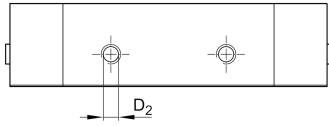
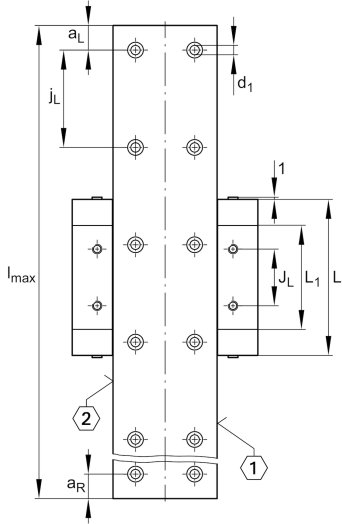
Medidas principales y datos de rendimiento

h 18 mm Height

b 42 mm Width

≈m 5,64 kg/m Peso

Medidas de montajeK₁ M3 ThreadK1 M_A 2,5 Nm Tightening torqued₁ 3,8 mm Bore diameter



Medidas

l_{max}	2.940 mm	Max length single piece guideway
$a_{L max}$	53 mm	Distance
$a_{L min}$	20 mm	Distance
$a_{R max}$	53 mm	
$a_{R min}$	20 mm	
j_L	60 mm	Increment
j_B	24 mm	Increment
a_5	9 mm	Distance
h_1	11,4 mm	Longitud

