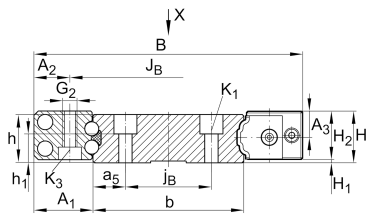
**TKVD71** [↗](#)

Guideways for linear recirculating ball bearing unit

full guideway for linear recirculating ball bearing units

Información técnica



Variante de su producto actual

Size code 71

Medidas principales y datos de rendimiento

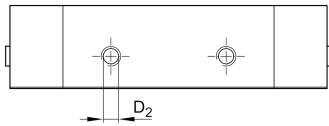
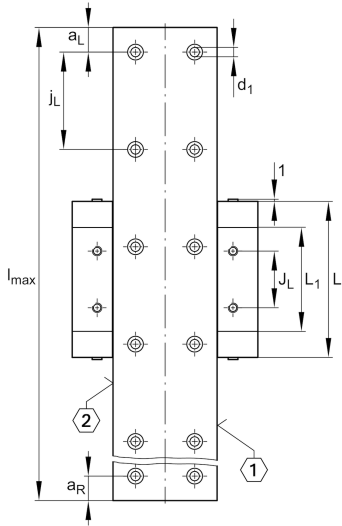
h 17 mm Height

b 71 mm Width

≈m 9,5 kg/m Peso

Medidas de montaje

K₁ M5 ThreadK1 M_A 10 Nm Tightening torqued₁ 6 mm Bore diameter



Medidas

l_{max}	2.940 mm	Max length single piece guideway
$a_{L max}$	53 mm	Distance
$a_{L min}$	20 mm	Distance
$a_{R max}$	53 mm	
$a_{R min}$	20 mm	
j_L	60 mm	Increment
j_B	50 mm	Increment
a_5	10,5 mm	Distance
h_1	8,3 mm	Longitud

