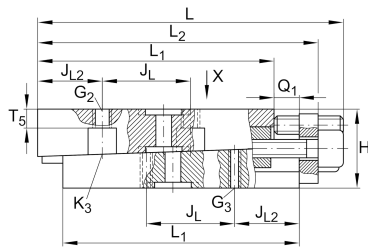
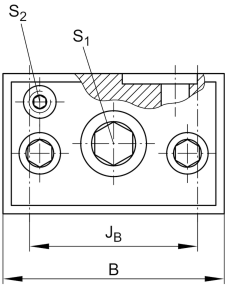




## VUS19105-A [↗](#)

Regleta de ajuste

### Información técnica

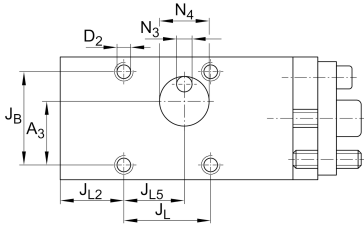


### Variante de su producto actual

Size code	19105
Version	A

### Medidas principales y datos de rendimiento

L	123 mm	Length max
H	16 mm	Height min
B	26,5 mm	Width
≈m	0,33 kg	Peso



### Medidas de montaje

L <sub>1</sub>	100 mm	
L <sub>2</sub>	119 mm	Max
J <sub>B</sub>	20,6 mm	
Tol J <sub>B</sub>	+ 0,1 mm	Upper tolerance
Tol J <sub>B</sub>	- 0,1 mm	Lower tolerance
J <sub>L</sub>	50 mm	
Tol J <sub>L</sub>	+ 0,1 mm	Upper tolerance
Tol J <sub>L</sub>	- 0,1 mm	Lower tolerance
J <sub>L2</sub>	25 mm	
J <sub>L5</sub>	29 mm	
Q <sub>1</sub>	15 mm	Max
A <sub>3</sub>	14,9 mm	
N <sub>3</sub>	3,5 mm	
N <sub>4</sub>	12 mm	
T <sub>5</sub>	3,5 mm	



### Información adicional

S 1	3 mm	Adjustment screw hexagon socket
S 2	2,5 mm	Locking/extraction screw hexagon socket
G 2	M4	Fixing screws DIN ISO4762-12.9
M A G2	5 Nm	Tightening torque
G 3	M3	Fixing screws DIN ISO4762-12.9
M A G3	1,8 Nm	Tightening torque
K 3	M3	Fixing screws DIN ISO4762-12.9
M A K3	1,8 Nm	Tightening torque
D 2	3,5 mm	Core hole
$\Delta h$	0,5 mm	Adjustment max
	0,023 mm	Adjustment per screw revolution

### Productos relacionados

RUS19105	For linear roller bearing
----------	---------------------------