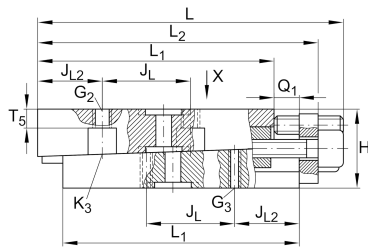
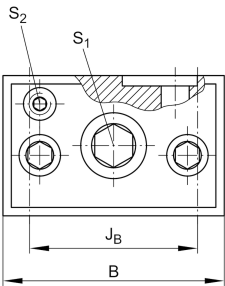


VUS38134-A [↗](#)

Regleta de ajuste

Información técnica

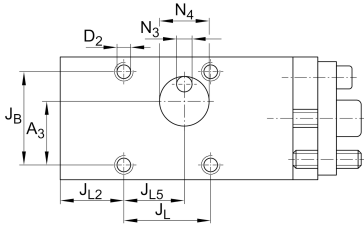


Variante de su producto actual

Size code	38134
Version	A

Medidas principales y datos de rendimiento

L	141 mm	Length max
H	30 mm	Height min
B	51,5 mm	Width
≈m	1,4 kg	Peso



Medidas de montaje

L ₁	115 mm	
L ₂	131 mm	Max
J _B	41 mm	
Tol J _B	+ 0,1 mm	Upper tolerance
Tol J _B	- 0,1 mm	Lower tolerance
J _L	51 mm	
Tol J _L	+ 0,1 mm	Upper tolerance
Tol J _L	- 0,1 mm	Lower tolerance
J _{L2}	28 mm	
J _{L5}	30,5 mm	
Q ₁	8 mm	Max
A ₃	28,25 mm	
N ₃	5 mm	
N ₄	22 mm	
T ₅	7 mm	



Información adicional

S 1	8 mm	Adjustment screw hexagon socket
S 2	4 mm	Locking/extraction screw hexagon socket
G 2	M8	Fixing screws DIN ISO4762-12.9
M A G2	41 Nm	Tightening torque
G 3	M6	Fixing screws DIN ISO4762-12.9
M A G3	17 Nm	Tightening torque
K 3	M6	Fixing screws DIN ISO4762-12.9
M A K3	17 Nm	Tightening torque
D 2	6,9 mm	Core hole
Δh	0,4 mm	Adjustment max
	0,062 mm	Adjustment per screw revolution

Productos relacionados

RUS38134	For linear roller bearing
----------	---------------------------