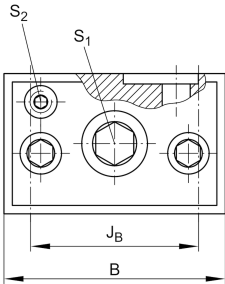




## VUS65210 [↗](#)

Regleta de ajuste

### Información técnica

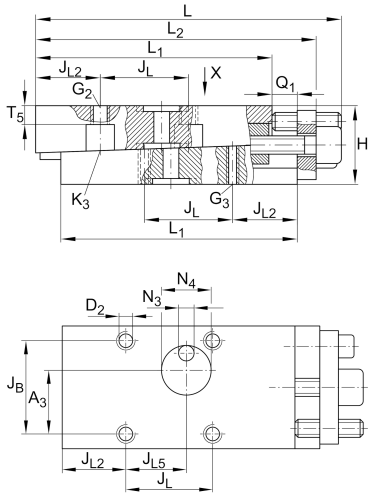


#### Variante de su producto actual

Size code 65210

#### Medidas principales y datos de rendimiento

L	234 mm	Length max
H	38 mm	Heigth min
B	75 mm	Width
≈m	4,5 kg	Peso



### Medidas de montaje

L <sub>1</sub>	200 mm	
L <sub>2</sub>	220 mm	Max
J <sub>B</sub>	62 mm	
Tol J <sub>B</sub>	+ 0,1 mm	Upper tolerance
Tol J <sub>B</sub>	- 0,1 mm	Lower tolerance
J <sub>L</sub>	76 mm	
Tol J <sub>L</sub>	+ 0,1 mm	Upper tolerance
Tol J <sub>L</sub>	- 0,1 mm	Lower tolerance
J <sub>L2</sub>	62 mm	
J <sub>L5</sub>	40,5 mm	
Q <sub>1</sub>	10 mm	Max
A <sub>3</sub>	30,9 mm	
A <sub>4</sub>	21,6 mm	
N <sub>3</sub>	8 mm	
N <sub>4</sub>	8 mm	
T <sub>5</sub>	7 mm	



### Información adicional

S 1	12 mm	Adjustment screw hexagon socket
S 2	5 mm	Locking/extraction screw hexagon socket
G 2	M10	Fixing screws DIN ISO4762-12.9
M A G2	83 Nm	Tightening torque
G 3	M8	Fixing screws DIN ISO4762-12.9
M A G3	41 Nm	Tightening torque
K 3	M8	Fixing screws DIN ISO4762-12.9
M A K3	41 Nm	Tightening torque
D 2	9 mm	Core hole
$\Delta h$	0,5 mm	Adjustment max
	0,075 mm	Adjustment per screw revolution

### Productos relacionados

RUS65210	For linear roller bearing
----------	---------------------------