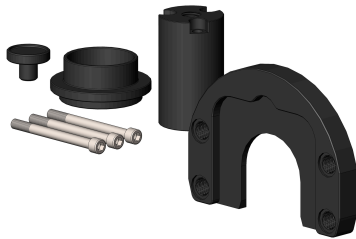


**BPP-100T-SOLENOID-VALVE** [↗](#)

Mobile hydraulic device

BETEX device for mounting/dismounting of tapered or cylindrical roller bearing units in wheelset bearings of rail vehicles, with solenoid valve, proceed way longitudinal

## Información técnica

**Variante de su producto actual**

Series	BPP/BPPS	BEARING PULLER/PUSHER
--------	----------	-----------------------

**Datos técnicos**

U	230 V	Voltage
	AC power	Current type
I	12 A	Amperage
f	50 – 60 Hz	Power frequency
F <sub>c max</sub>	660 kN	Max. contact force cylinder
s <sub>c max</sub>	392 mm	Max. working stroke cylinder
P <sub>max</sub>	700 bar	Max. operating pressure
	370 – 1050	Working height range [bottom – center axis cylinder] (mm)
	2210 x 652 x 900	Dimensions [LxWxH] (mm)
≈m	560 kg	Peso

**Funciones**

electrically driven hydraulic unit for function main cylinder and height adjustment, remote control	Functional principle
hydraulically by means of aggregate	Height adjustment
2 swivel castors with brake function, 2 fixed castors	Castors



### Información adicional

---

Product is manufactured to order. Request with specification of the application case to customer service.

Availability

only in conjunction with bearing/ application-specific tool set (not included in delivery, separate on request)

Usability