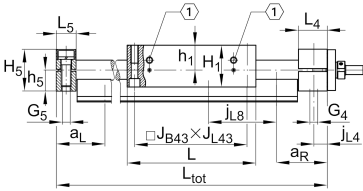
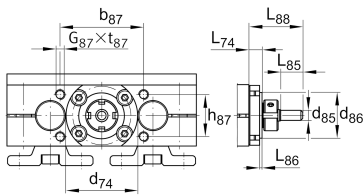
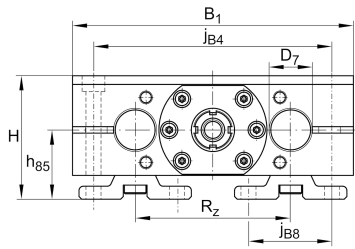


**LTS30-180-2010-MM-0** [↗](#)

Mesa lineal

Información técnica

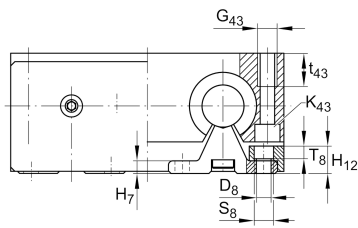
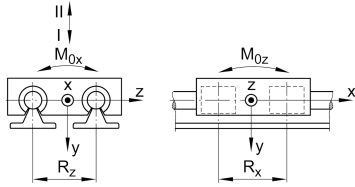


Variante de su producto actual

Size code	30	
Drive type	KGT	Ball screw drive
Length of carriage	180	180 mm
Spindle diameter	20	20mm
Spindle pitch	10	10 mm
Spindle nut design	MM	Double cylinder nut
Bellow	0	No

Medidas principales y datos de rendimiento

H	77 mm	Total Height
B 1	180 mm	Total Width
L	180 mm	Length of carriage



Medidas de montaje

D 7	30 mm	Tolerance h7
D 8	9 mm	
H 1	60 mm	Height of carriage
H 12	16 mm	
J B43	158 mm	
j B8	51 mm	
j L8	150 mm	
K 43	M10	
L tot	5,850 mm	Maximum length
R x	98,6 mm	
S	10 mm	Safety distance
S	15 mm	
T 8	7,5 mm	
t 43	26 mm	Depth of Thread
t 87	15 mm	Depth of Thread
b 87	68 mm	Tolerance ±0,2
d 85	10 mm	Diameter drive shaft, Tolerance h7
d 86	60 mm	Tolerance g7
G 4	M12	Thread
G 5	M12	Thread
G 87	M6	Thread
G 43	M12	Thread
h 5	29 mm	
h 85	42 mm	
h 87	44 mm	Tolerance ±0,2
J L43	158 mm	
j B4	150 mm	
J L4	12,5 mm	



Medidas

H 7	7 mm	
h 1	35 mm	
L 4	38 mm	Length of Shaft Support Block with Drive System
L 5	25 mm	Length of Shaft Support Block without drive System
L 88	36,5 mm	
L 86	9,4 mm	
R z	96 mm	
H 5	58 mm	Height of Shaft Support Blocks



Datos técnicos

v_{\max}	0,5 m/s	Maximum Speed
a_{\max}	10 m/s ²	Maximum Acceleration
d_0	20 mm	Spindle Diameter
P	10 mm	Spindle Pitch
m_{LAW}	4,3 kg	Mass of Carriage
I_s	0,846 kg*cm ²	Mass moment of inertia of threaded Spindle
C_I	9.760 N	Load direction I: compressive load
C_{0I}	12.000 N	Load direction I: compressive load
C_{II}	5.930 N	Load direction II: tensile load
C_{0II}	7.600 N	Load direction II: tensile load
C_{III}	8.970 N	Load direction III: lateral load
C_{0III}	10.700 N	Load direction III: lateral load
C	12.700 N	Load capacity Spindle Nut dyn
C_0	22.100 N	Load capacity Spindle Nut stat
C_a	17.900 N	Load capacity fixed Spindle bearing dyn
C_{0a}	28.000 N	Load capacity fixed Spindle bearing stat
M_{0x}	340 Nm	Max. permissible static moment per Carriage
M_{0y}	450 Nm	Max. permissible static moment per Carriage
M_{0z}	345 Nm	Max. permissible static moment per Carriage

Información adicional

	17 Nm	Max. permissible drive torque
	ZKLN1545.2RS-PE	Rolling Bearings
	0,025 mm	Repeat Accuracy ±
	0,846 kg*cm ²	Mass moment of inertia of threaded Spindle
	KBO30-PP-AS	Bearing



Rango de temperatura

min	0 °C	Minimum operating Temperatur
max	80 °C	Maximum operating Temperatur