**LFS32** **Carril-guía**

solid profile, with two raceway shafts;
corrosion-resistant design possible

Información técnica**Variante de su producto actual**

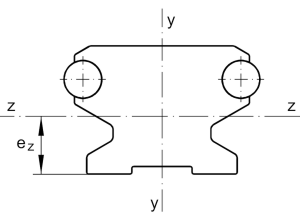
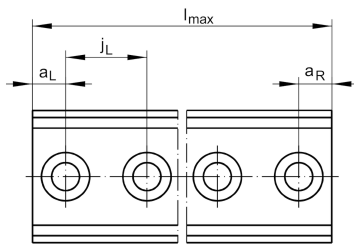
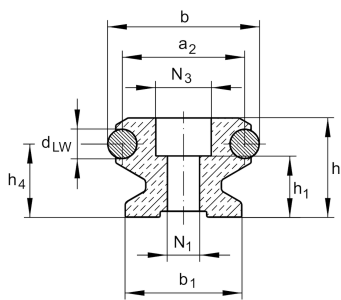
| | |
|-----------|----|
| Size code | 32 |
|-----------|----|

Medidas principales y datos de rendimiento

| | | |
|-----------|------------------------|-------------------------|
| h | 20 mm | Height |
| b | 32 mm | Width |
| l_{max} | 6.000 mm | Length maximum |
| I_y | 20.100 mm ⁴ | Second moment of area |
| I_z | 14.100 mm ⁴ | Second moment of area |
| LF Q | 440 mm ² | Cross-sectional area |
| W_y | 1.440 mm ³ | Wider resistance torque |
| W_z | 1.360 mm ³ | Wider resistance torque |

Medidas de montaje

| | | |
|-------|--------|---------------|
| N_1 | 6,5 mm | Bore diameter |
| N_3 | 12 mm | Bore diameter |





Medidas

| | | |
|--------------------|---------|-----------|
| a ₂ | 26 mm | Distance |
| a _{L max} | 116 mm | Distance |
| a _{L min} | 11 mm | Distance |
| a _{R max} | 116 mm | |
| a _{R min} | 11 mm | |
| b ₁ | 24 mm | Anchura |
| d _{LW} | 6 mm | Diameter |
| e _Z | 10,4 mm | Distance |
| h ₁ | 12 mm | Height |
| h ₄ | 15 mm | Height |
| j _L | 125 mm | Increment |