**LFS32-E**

Carril-guía

solid profile, fixing hole spacing half of standard, with two raceway shafts; corrosion-resistant design possible

Información técnica

Variante de su producto actual

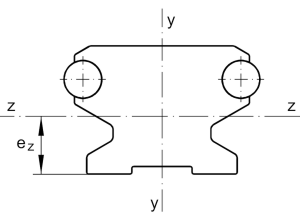
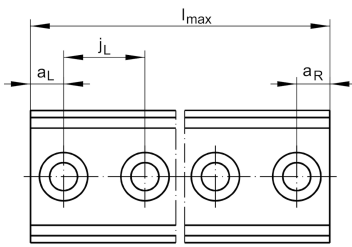
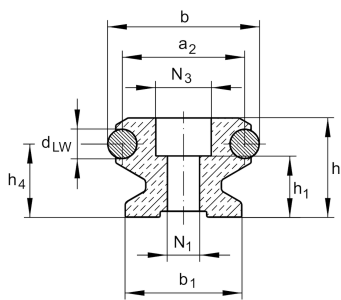
Size code	32	
Location guideway	E	Fixing hole spacing half of standard

Medidas principales y datos de rendimiento

h	20 mm	Height
b	32 mm	Width
l_{max}	6.000 mm	Length maximum
I_y	20.100 mm ⁴	Second moment of area
I_z	14.100 mm ⁴	Second moment of area
LF _Q	440 mm ²	Cross-sectional area
W_y	1.440 mm ³	Wider resistance torque
W_z	1.360 mm ³	Wider resistance torque

Medidas de montaje

N_1	6,5 mm	Bore diameter
N_3	12 mm	Bore diameter





Medidas

a ₂	26 mm	Distance
a _{L max}	52 mm	Distance
a _{L min}	11 mm	Distance
a _{R max}	52 mm	
a _{R min}	11 mm	
b ₁	24 mm	Anchura
d _{LW}	6 mm	Diameter
e _Z	10,4 mm	Distance
h ₁	12 mm	Height
h ₄	15 mm	Height
j _L	62,5 mm	Increment