**LFS52-EE** [↗](#)

Carril-guía

solid profile, fixing hole spacing half of E,
with two raceway shafts; corrosion-resistant
design possible

Información técnica

Variante de su producto actual

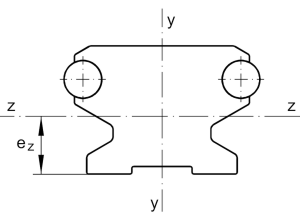
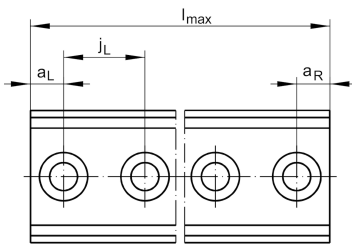
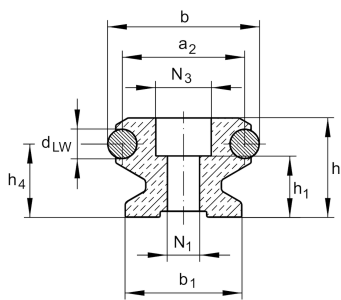
Size code	52	
Location guideway	EE	Fixing hole spacing half of E

Medidas principales y datos de rendimiento

h	34 mm	Height
b	52 mm	Width
l_{max}	6.000 mm	Length maximum
I_y	138.624 mm ⁴	Second moment of area
I_z	113.037 mm ⁴	Second moment of area
LF _Q	1.170 mm ²	Cross-sectional area
W_y	5.878 mm ³	Wider resistance torque
W_z	6.350 mm ³	Wider resistance torque

Medidas de montaje

N_1	11 mm	Bore diameter
N_3	19 mm	Bore diameter





Medidas

a ₂	42 mm	Distance
a _{L max}	49 mm	Distance
a _{L min}	17 mm	Distance
a _{R max}	49 mm	
a _{R min}	17 mm	
b ₁	40 mm	Anchura
d _{LW}	10 mm	Diameter
e _Z	17,8 mm	Distance
h ₁	21 mm	Height
h ₄	25,1 mm	Height
j _L	62,5 mm	Increment