

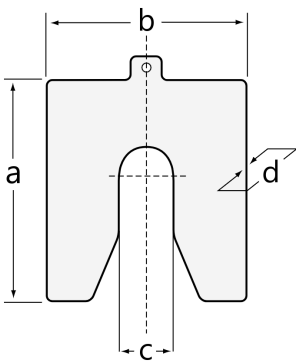


## SHIMS-100-050-CU-100X100X0.50 [🔗](#)

### Shims

BETEX Shims C 100, for alignment of machines and machine components

## Información técnica



### Variante de su producto actual

Series	SHIMS	Solid, stainless steel
Version	C 100	Size: 100 mm × 100 mm

### Medidas

a	100 mm	
b	100 mm	
c	32 mm	
d	0,5 mm	
≈m	32,8 g	Peso

### Información adicional

10 pieces shims, stainless steel 1.4301, solid	Package content
suitable for reuse, discs rounded and deburred	Product specifics