

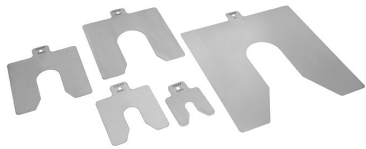
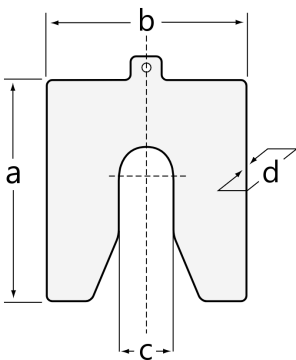


SHIMS-200-005-EN-200X200X0.05 [🔗](#)

Shims

BETEX Shims E 200, for alignment of machines and machine components

Información técnica



Variante de su producto actual

Series	SHIMS	Solid, stainless steel
Version	E 200	Size: 200 mm × 200 mm

Medidas

a	200 mm	
b	200 mm	
c	55 mm	
d	0,05 mm	
≈m	11,8 g	Peso

Información adicional

10 pieces shims, stainless steel 1.4301, solid	Package content
suitable for reuse, discs rounded and deburred	Product specifics